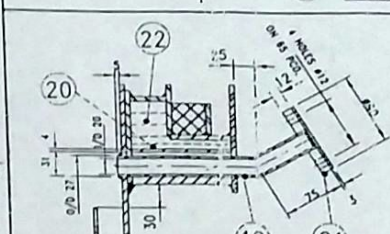
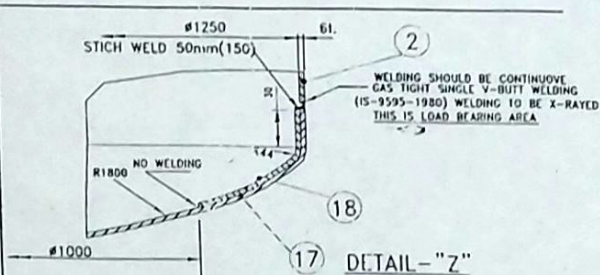
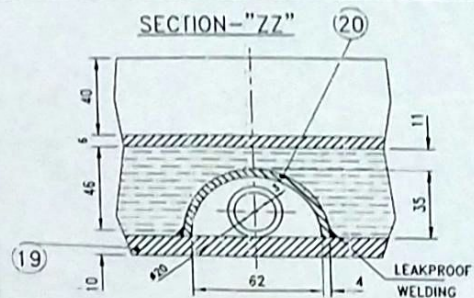
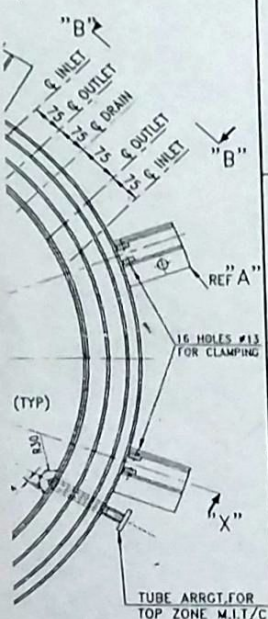
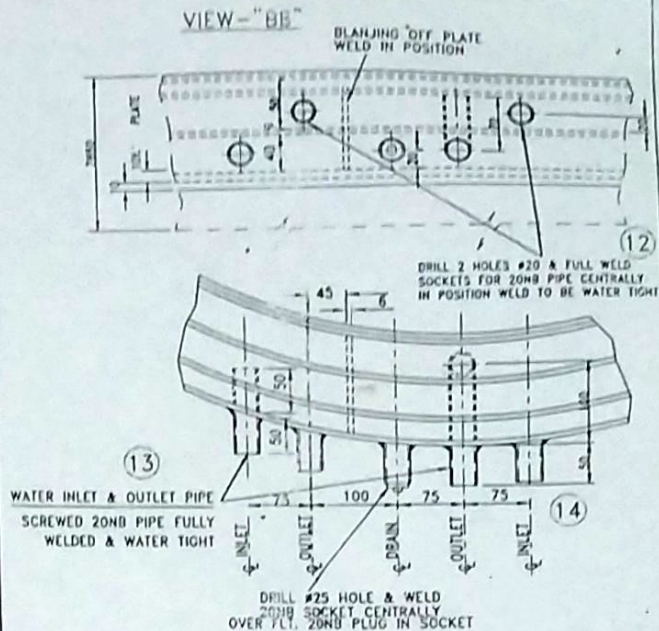
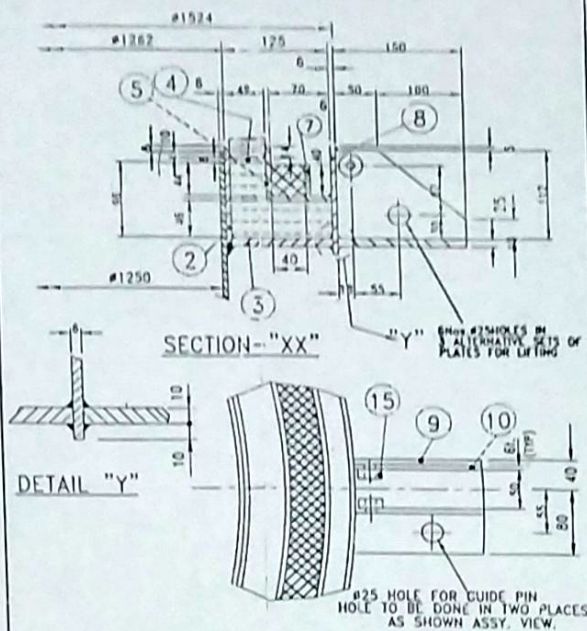
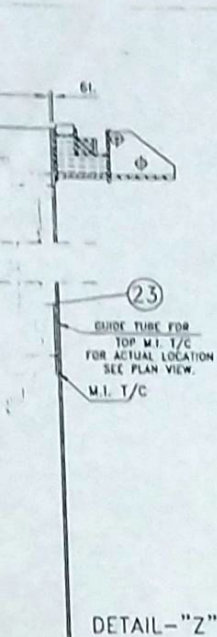


No.	DESCRIPTION	SIZE	MATERIAL	QTY.	REMARKS
21	PLATE	101x150x4t	ASP-310	1	
22	PLATE	175x250x4t	ASP-310	1	
23	PLATE	175x250x4t	CALMATED ASP-310S	2	
24	PLATE	0.8x0.8x1.37x128	ASP-304	2	
25	PLATE	0.9x0.9x1.37x128	ASP-310	2	
26	PLATE	118x154x4t	ASP-310	2	
27	PLATE	240x72x3t	ASP-310	1	
18	PLATE	581x91x50x4t	ASP-310	1	
17	ATTORNY PLATE	181x250x4t	ASP-310	1	
16	REGISTRATION (0.000001-137x128)	415x49x10x4t	WELDED WOOD BLANKET	-	
15	PLATE	0.8x0.8x1.37x128	M.S. U.S.-2062	16	
14	PLATE	20 1/2x125x4t	U.S. 1239 PART-4	1	
13	PLATE	20 1/2x105x4t	U.S. 1239 PART-1	1	
12	SHEET	FOR 2008 PIPE	U.S. 1239 PART-8	3	
11	PLATE	4437x10x40	MCO FRICKE	1	
10	PLATE (RND)	150x41 1/2x4t	M.S. U.S.-2062	16	
9	PLATE	150x41 1/2x4t	M.S. U.S.-2062	8	
8	PLATE	4789x137x4t side	ASP-310	1	
7	PLATE	4582x105x4t side	ASP-310	1	
6	PLATE	425x120x4t side	ASP-310	1	
5	PLATE	181x174x0.01 1360x4t	ASP-310	1	
4	PLATE	181x174x0.01 1572x10	ASP-310	1	
3	PLATE	308x411x4t side	ASP-310	1	
2	PLATE	344x155x4t	ASP-310	1	
1	PLATE	344x155x4t	ASP-310	1	

BILL OF MATERIAL

BEML LTD
PLANT MAINTENANCE
DRG NO: ESE/PS3-24



GEN. NOTE:-

1. ALL DIMENSIONS ARE IN MM, UNLESS OTHERWISE SPECIFIED.
2. ALL WELDING SHALL BE DONE BY TIG PROCESS EXCEPT W.S. PARTS.
3. ALL VERTICAL JOINTS SHOULD BE STAGGERED.
4. ALL JOINTS SHOULD BE GAS TIGHT.
5. DETAIL OF PART No.-11 (NEOPRENE SEAL) SHORE HARDNESS:-45° - 5°

S.No.	DESCRIPTION	SIZE	MATERIAL	QTY.	REMARKS
24	PLATE	101x1950x4	ASTM-310	1	
23	PLATE	101x950x4	ASTM-310	1	
22	PACKING	0.9.90x1.0.27x38	GRAPHITIZED ASBESTOS	2	
21	FLANGE	0.9.90x1.0.27x12L	ASTM-304	2	
20	PLATE	119x114x4	ASTM-310	2	
19	PLATE	740x12x3L	ASTM-310	2	
18	PLATE	3910x150x6L	ASTM-310	1	
17	RETORT DASH	1.0.1250x4L	ASTM-310	1	
16	INSULATION (DENSITY:-127kg/Cm ³)	4156x49x25L	CERAMIC WOOL BLANKET	1	HOT REGR.
15	PIPE	0.0.28x1.0.13x12L	M.S. LS-2062	16	
14	PIPE	20 Wx1250L	LS.1239 PART-1	4	
13	PIPE	20 Wx1000L	LS.1239 PART-1	1	
12	SOCKET	FOR 20NB PIPE	LS.1239 PART-8	3	
11	SEAL	4437x10x40	NEO PRENE	1	
10	PLATE (RIB)	150x117x4	M.S. LS-2062	16	
9	PLATE	150x117x4	M.S. LS-2062	8	
8	PLATE	4769x1177x4	ASTM-310	1	
7	PLATE	4582x104x4L	ASTM-310	1	
6					
5	PLATE	4293x104x4L	ASTM-310	1	
4	PLATE	1.0.127x4x0.0.1360x4L	ASTM-310	1	
3	PLATE	1.0.127x4x0.0.1512x10L	ASTM-310	1	
2	PLATE	3984x1177x4	ASTM-310	1	
1	PLATE	3946x1854x4L	ASTM-310	1	

BILL OF MATERIAL

BEML LTD
PLANT MAINTENANCE